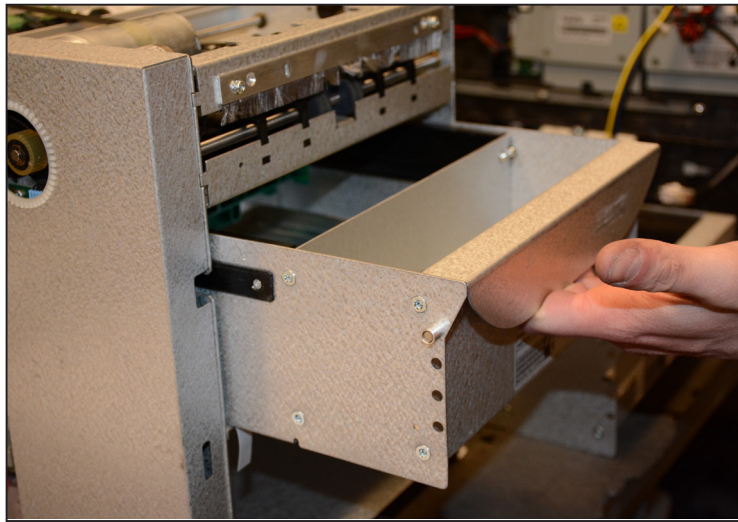
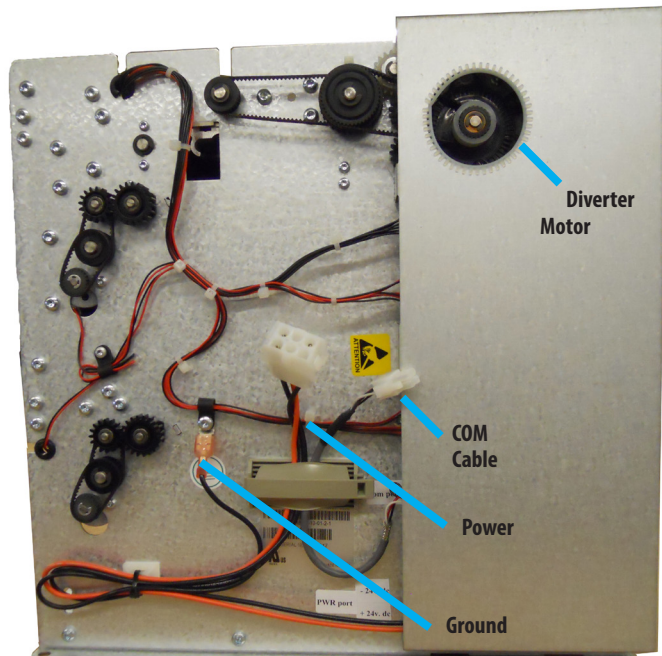


MultiMech Bill Dispenser



Top Cassette with Reject Vault Tray

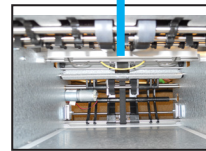


Side View of MultiMech Bill Dispenser

Note Qualifier Baffle Closing Procedure

- With yellow handle pulled toward you, close the Note Qualifier Baffle until front edge of baffle isn't visible.
- Push Yellow handle back until metal tabs lock into position as shown.

Front Edge of Baffle

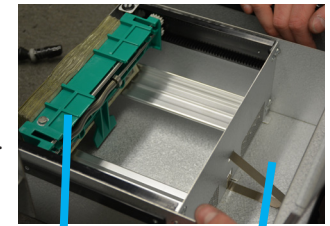


Locking Tabs



Top Bill Cassette with Reject Vault

- Remove bills from Cassette.
- Check that pusher plate touches end plate evenly.
- Bottom Bill Cassette does not have a Reject Vault Area.

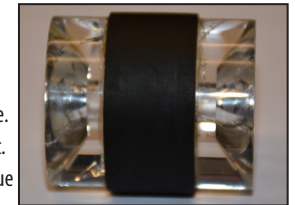


Pusher Plate Reject Vault Area

Error Code

Note Feeder Exit Sensor Failure

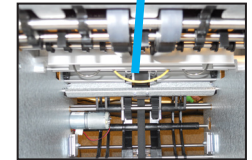
- Locate prism behind top cassette.
- If cracked, ICS needs to replace it.
- If cracked, fatal error will continue to occur until prism is replaced.



Cracked Prism

Motor Failure If Main Motor does not spin

- If the motor does not spin, gear could be stuck on metal main board protective cover.



Gear Caught on Metal Protected Board Cover

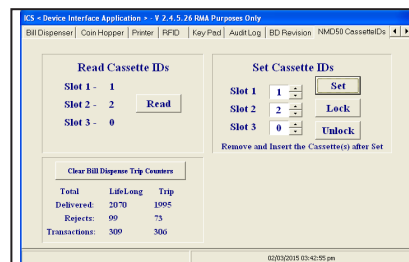
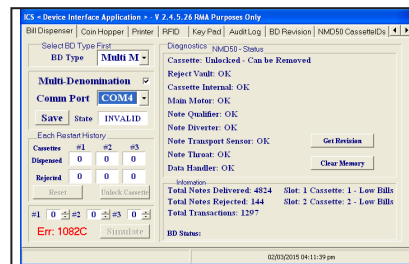
Diagnostics

The diagnostic screen can be accessed on an Auto Sentry to clear bill calibration and reset both cassettes.

- If the bill dispenser is rejecting a large amount of good condition dollar bills, you will need to reset or clear the memory.
- Open Device Interface Application, from Bill Dispenser tab, select **Clear Memory**. Select **Yes** to the confirmation prompt.
- A minimum of the first six bills will be fed to the reject vault/tray during the calibration attempt.

NOTE: Clear Memory will erase the stored bill qualifier information.

- From the **Cassette IDs** tab, in Slot 1 type 1 and in Slot 2 type 2, and then click **Set**.



Power Connection

- Disconnect power plug for 5 seconds then reconnect.
- Plug wires in securely to prevent power surges, or burning power connector and computer boards.



Problem/Cause

Bills are not being fed from bill cassette

- Check that bills are properly loaded in cassette
- Ensure that the bills are in good condition
- Check pusher bar adjustment
- Clean pick wheels
- Ensure cassette is properly inserted

Bills jam after they are fed from cassette

- Check pusher bar adjustment
- Ensure that the bills are in good condition
- Remove cassette and check for jam behind cassette
- Remove cassette and check note qualifier area for contamination

High bill note rejection rate

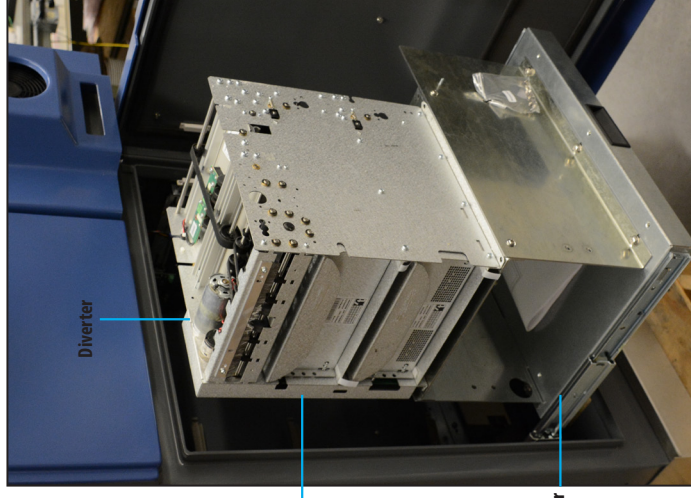
- Ensure that the bills are in good condition
- Check pusher bar adjustment
- Remove cassette and check note qualifier area for contamination
- Clear bill calibration and reset memory for both cassettes using the diagnostics screen on Auto Sentry.

Bill jams in diverter area

- Check to see if both diverter drive roll shaft bearing are present
- Ensure that back of diverter motor is parallel with bill dispenser frame
- Manually feed and try again
- Ensure all wheels are clean

Communication Problems

- Reseat all three communication plugs / connectors



MultiMech Bill Dispenser seated on Auto Sentry open drawer.