

Instructions for  
*Replacing a Printed Circuit (PC) Board*  
for *Fujitsu*® Brand Bill Dispensers

# Before You Begin

- Always turn the power to the unit off before you begin.
- Have someone available to help you lift the bill dispenser if necessary.
- Read all instructions first.
- A qualified ICS technician can help ensure these instructions are followed correctly. Contact ICS for support.

# Remove the Bill Acceptor

- Remove the bill dispenser.
- Place on clean, dry work surface.
- Refer to ICS document titled
  - *Removal & Installation Steps for Fujitsu Dispensers*

# Required Tools

- #2 Phillips Screwdriver



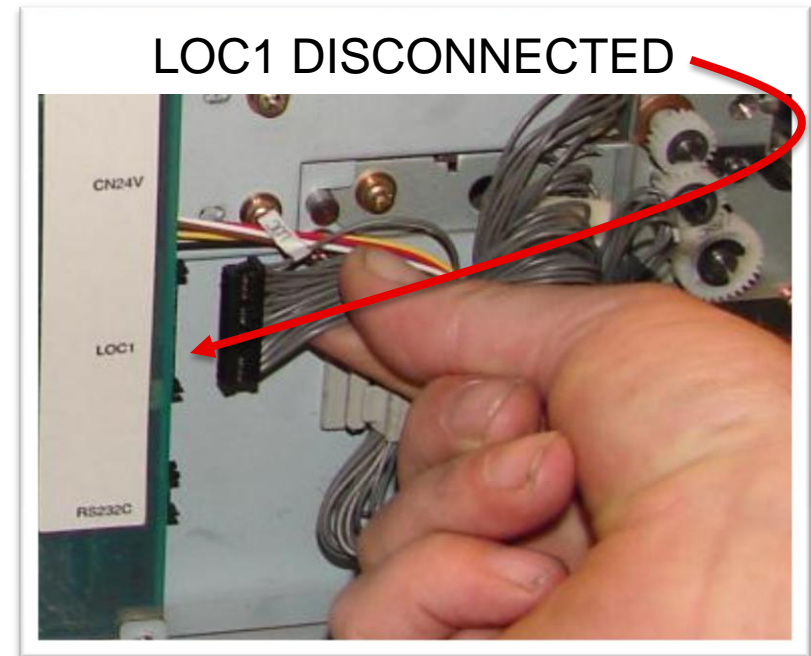
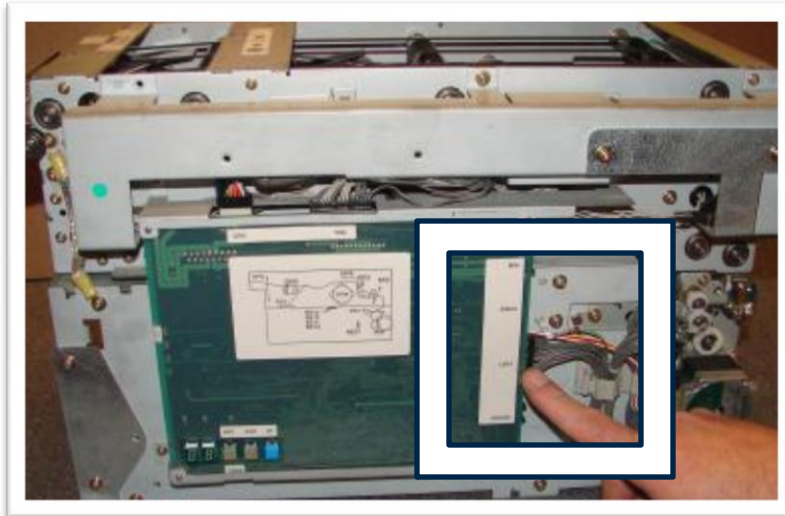
# Replacing the PC Board

- Position the dispenser with the PC Board facing you, as shown.



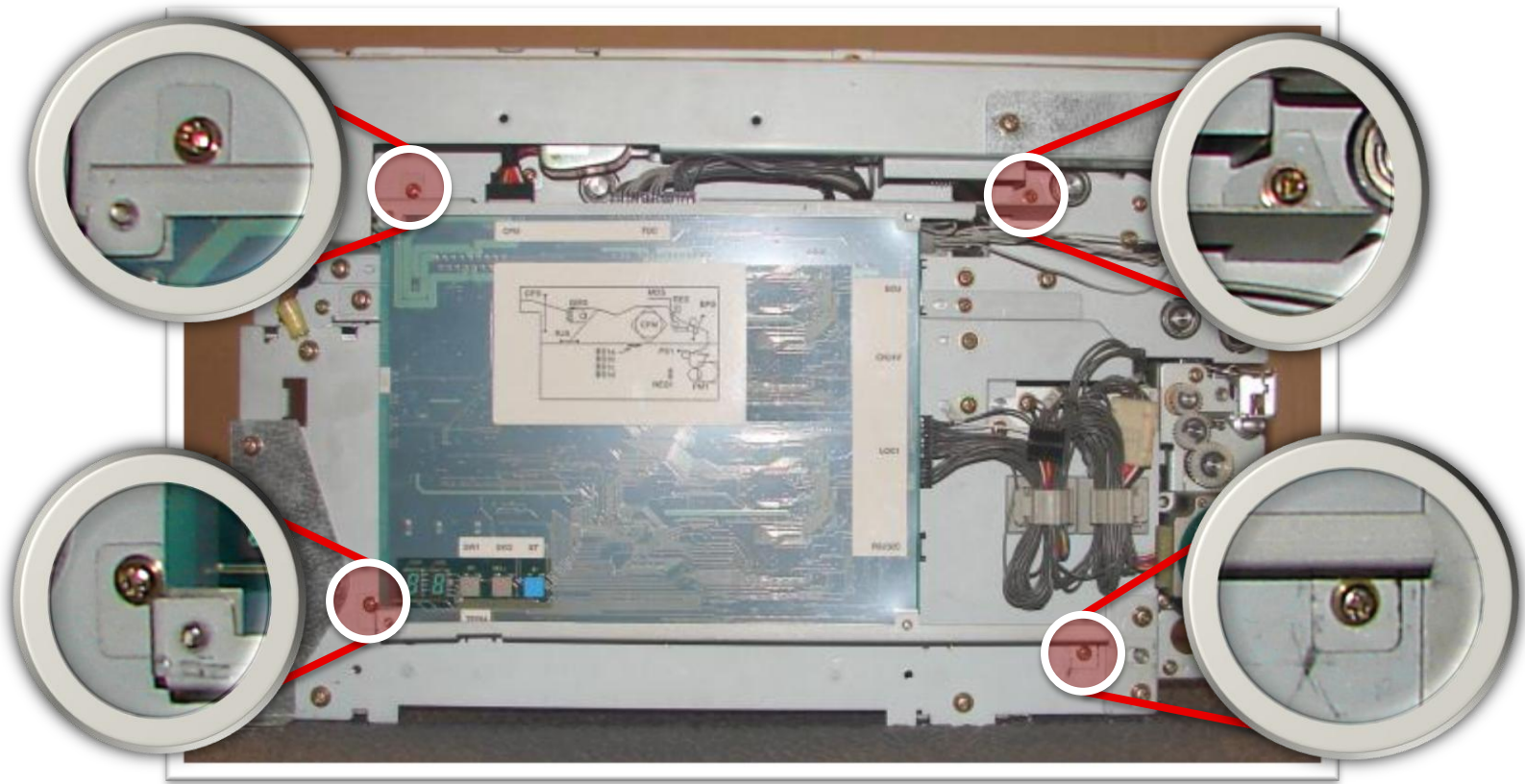
# Replacing the PC Board

- Disconnect LOC1 connector.



# Replacing the PC Board

- Remove four corner screws.



# Replacing the PC Board

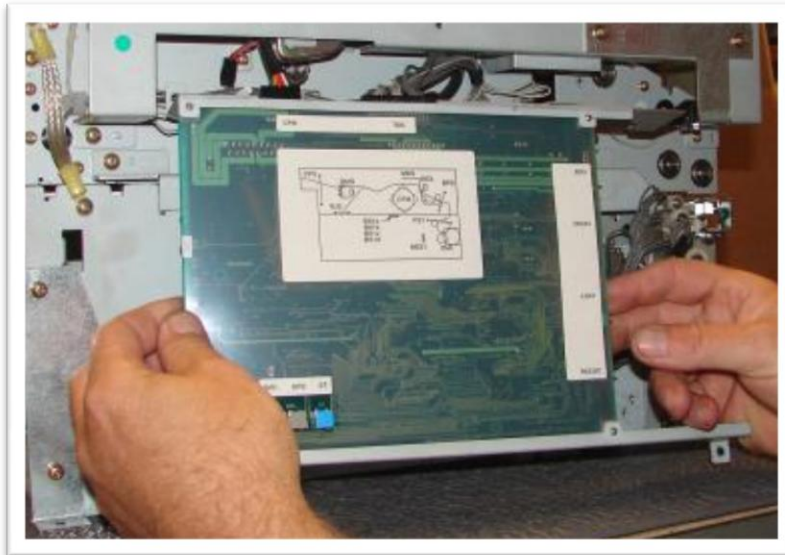
- Save screws.





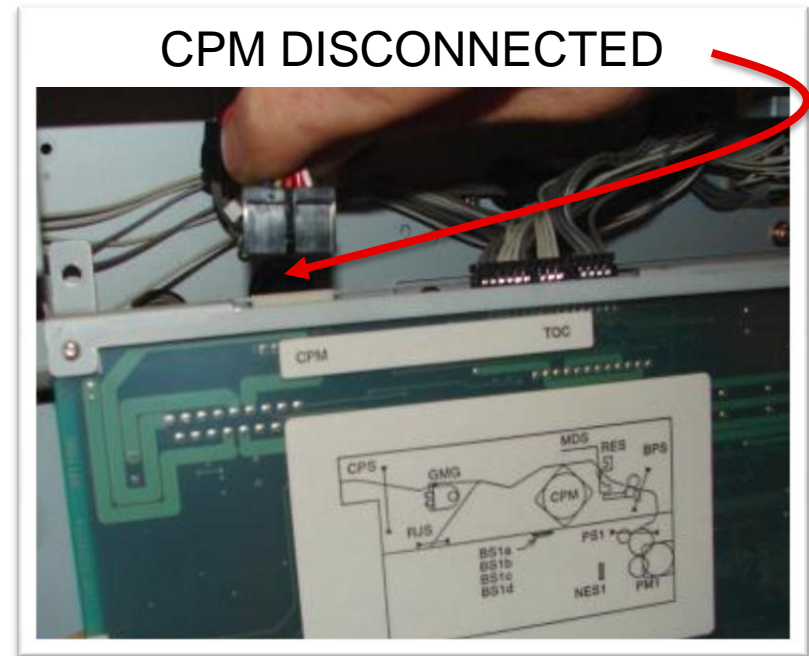
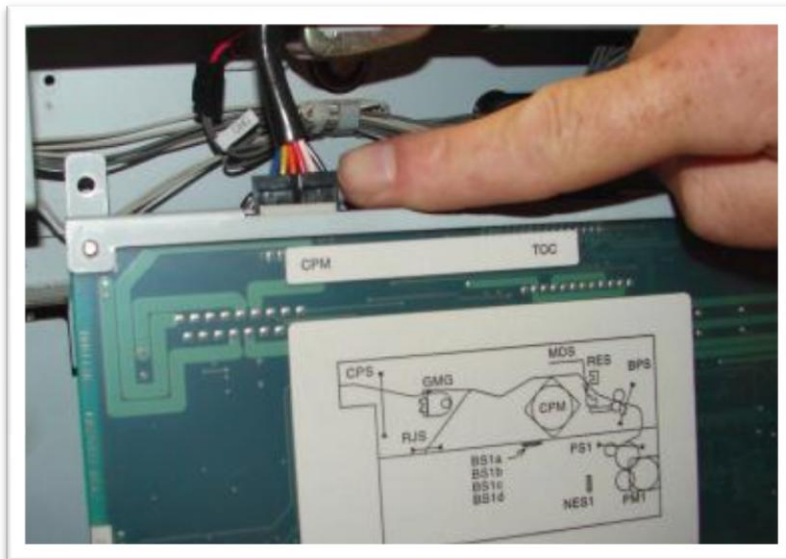
# Replacing the PC Board

- Partly remove PC board.



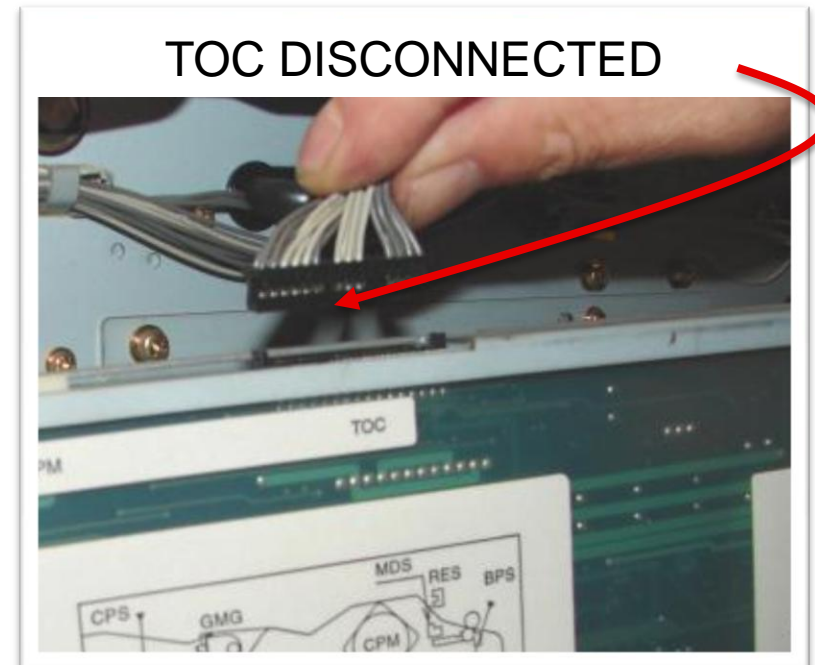
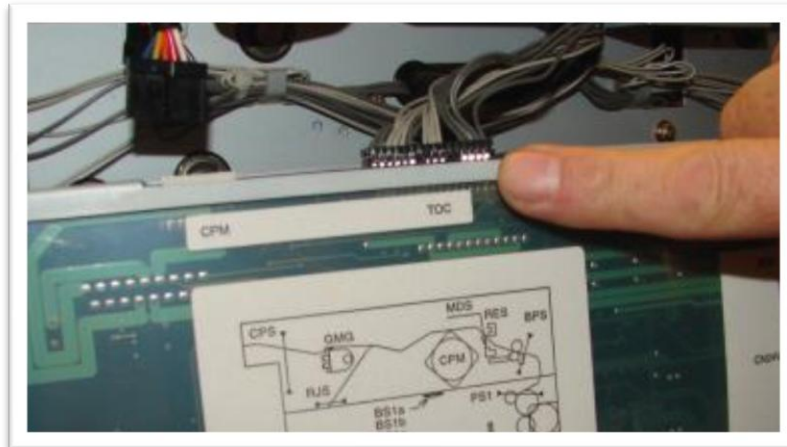
# Replacing the PC Board

- Disconnect CPM connector.



# Replacing the PC Board

- Disconnect TOC connector.



# Replacing the PC Board

- Completely remove PC board.



# Replacing the PC Board

- Follow instructions in reverse to install new board.
  - Connect TOC connector.
  - Connect CPM connector.
  - Replace four corner screws.
  - Connect LOC1 connector.
  - Replace bill dispenser in unit and test.

- Contact ICS Support for more information:  
610-881-8001 - Direct  
1-800-642-9396 - Toll free
- Information in this presentation is subject to change without notice. Companies, names and data used in examples within the presentation are fictitious unless otherwise noted. No part of this presentation may be reproduced or transmitted in any form or by any means, electronic or mechanical, for any purpose without the express written permission of Innovative Control Systems, Inc.
- ICS is not responsible for damage, bodily harm, loss of business, etc. due to the information contained in this document. Refer to the standard sales agreement and warranty information that came with your ICS product for more details.

*Auto Sentry, Lube Master and Tunnel Master* are registered trademarks of Innovative Control Systems, Inc.

*Touch 'N Clean and Wash Valet* are trademarks of Innovative Control Systems, Inc.

*Fujitsu* is a registered trademark of Fujitsu Limited Corporation, Japan .

*DeLaRue* is a registered trademark of De la Rue Holdings, plc.

*Talaris* is a registered trademark of Talaris Holdings Limited.