



Instructions for *Programming Multiple Cassettes* for *Fujitsu*® Brand Bill Dispensers

Before You Begin

- Read all instructions first.
- A qualified ICS technician can help ensure these instructions are followed correctly. Contact ICS for support.

Remove the Bill Cassette

- Remove the bill dispenser cassette.
- Place on clean, dry work surface.

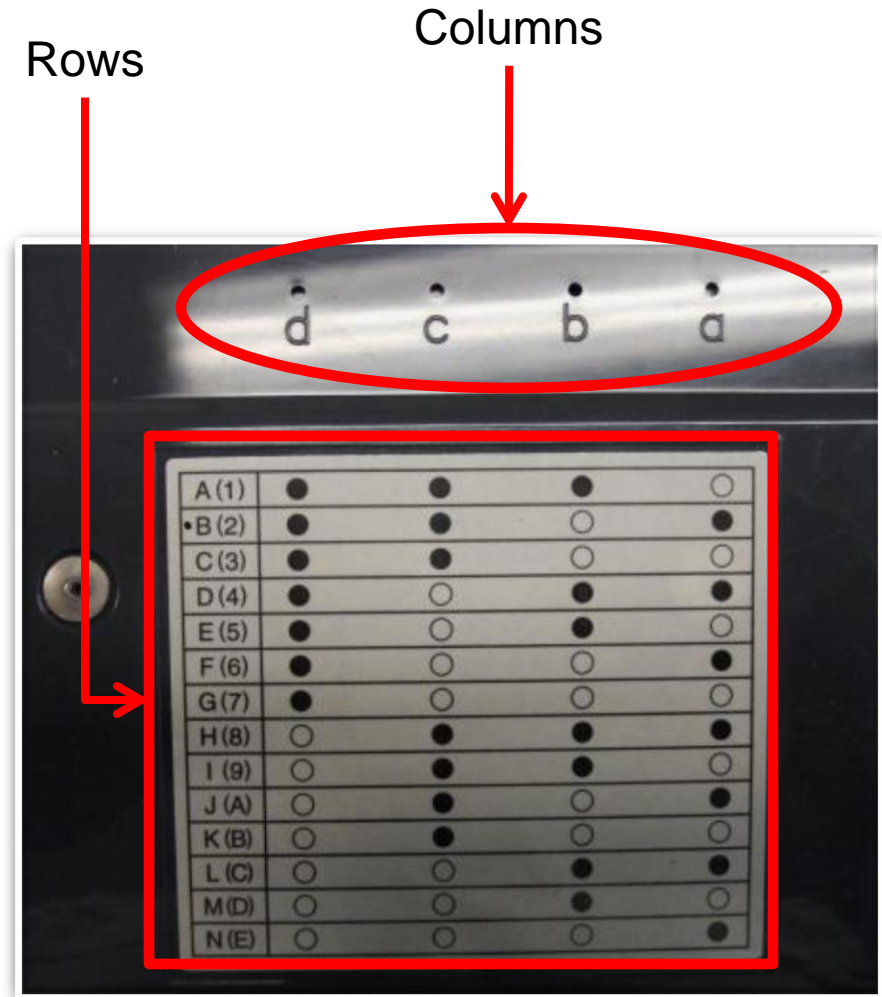
Required Tools

- #2 Phillips Screwdriver



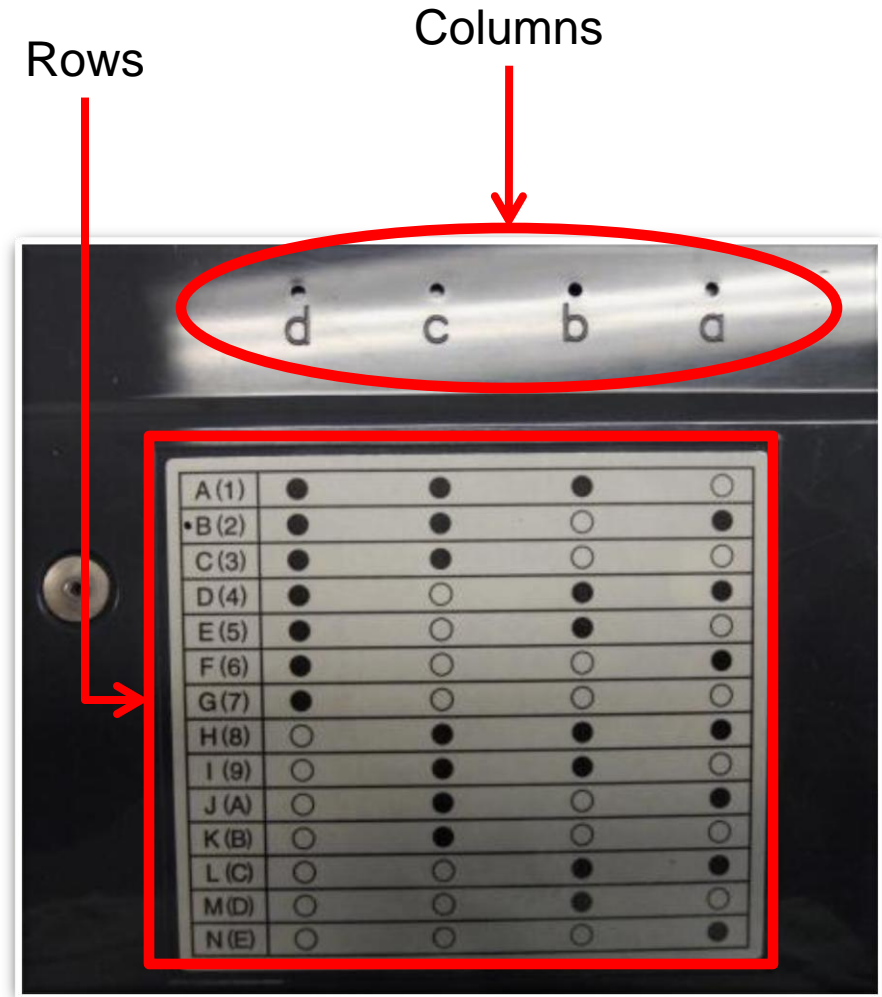
Reading the Cassette Table

- A cassette table shows you how to program a cassette.
- The 14 rows are labeled A(1) through N(E). The columns are labeled “d”, “c”, “b” and “a”.
- Look closely at the holes above each column letter to see which positions are filled.



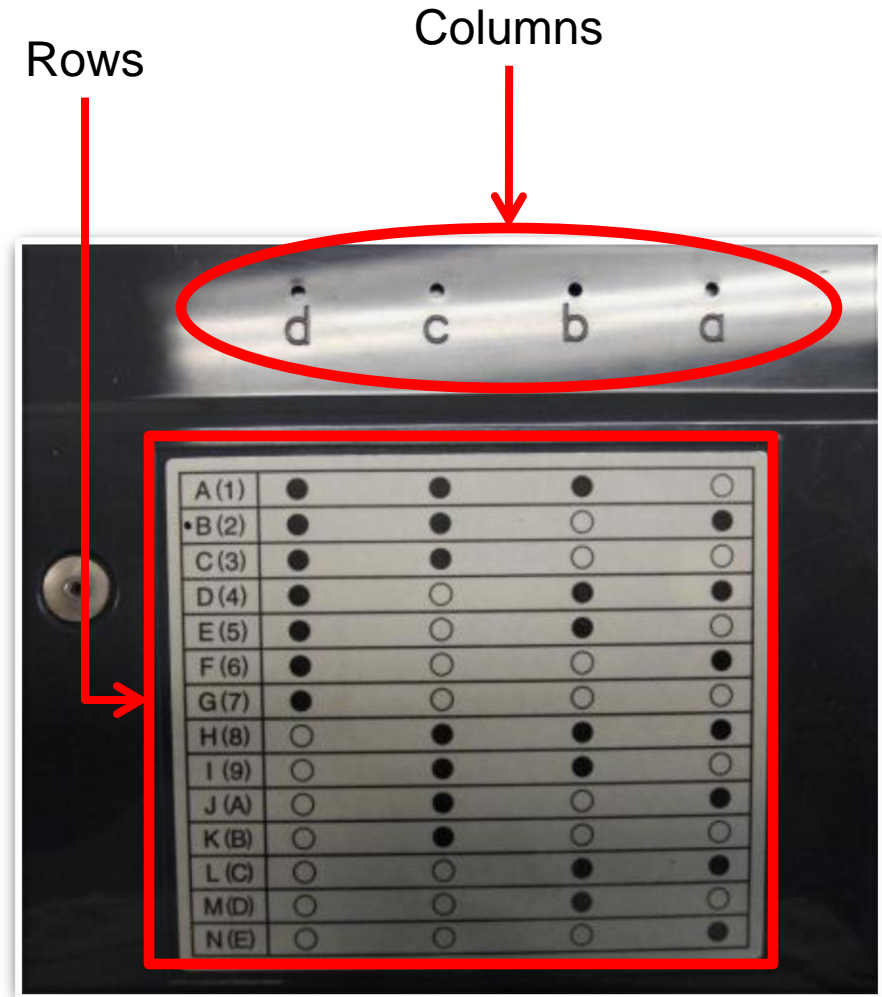
Reading the Cassette Table

- You will use magnets to fill the positions. Magnets are applied to the back-side of the cover.
- Black circles in the table indicate a position should be filled.
- White circles indicate a position should be empty.



Reading the Cassette Table

- Look at row A(1). It shows that magnets should be applied to positions “d”, “c”, and “b”. Position “a” should be left empty.
- Once you apply the magnets in this way, the cassette is programmed as number A(1).



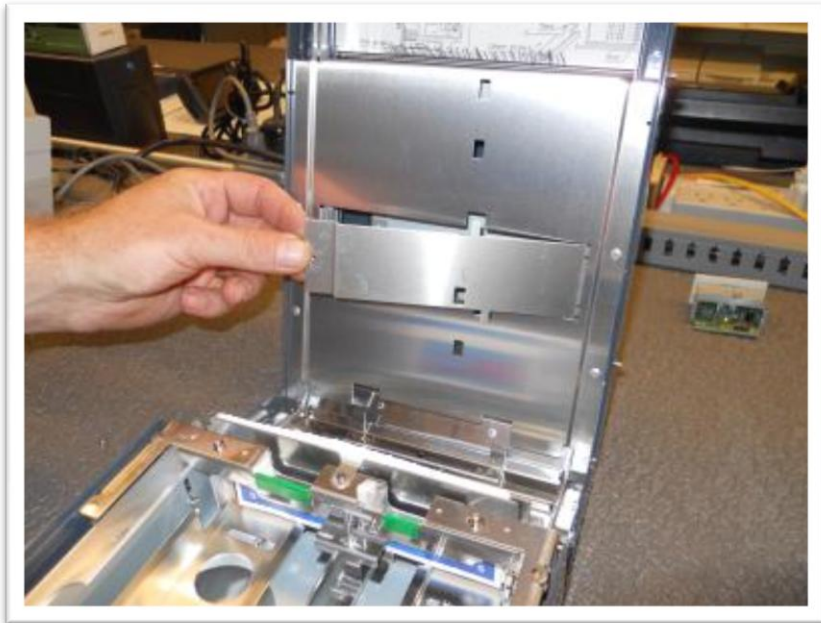
Removing the Faceplate

- Remove the bill dispenser from the unit.
- Open the bill dispenser lid and locate the faceplate.
- Remove one screw on the left side of the faceplate.



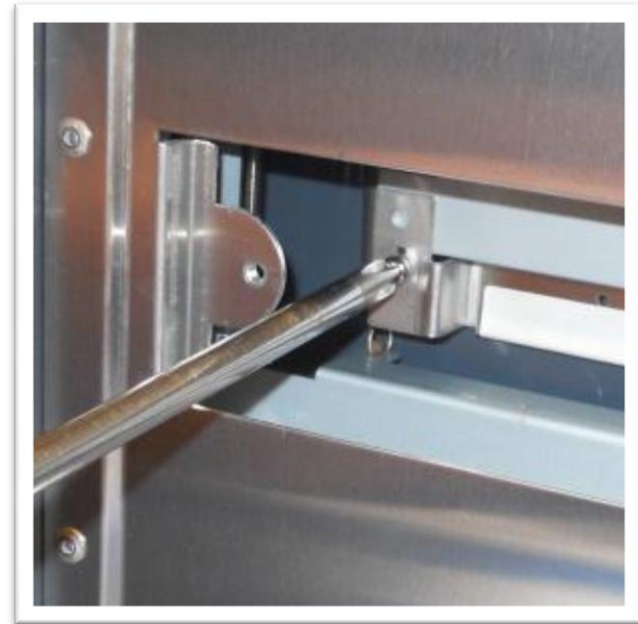
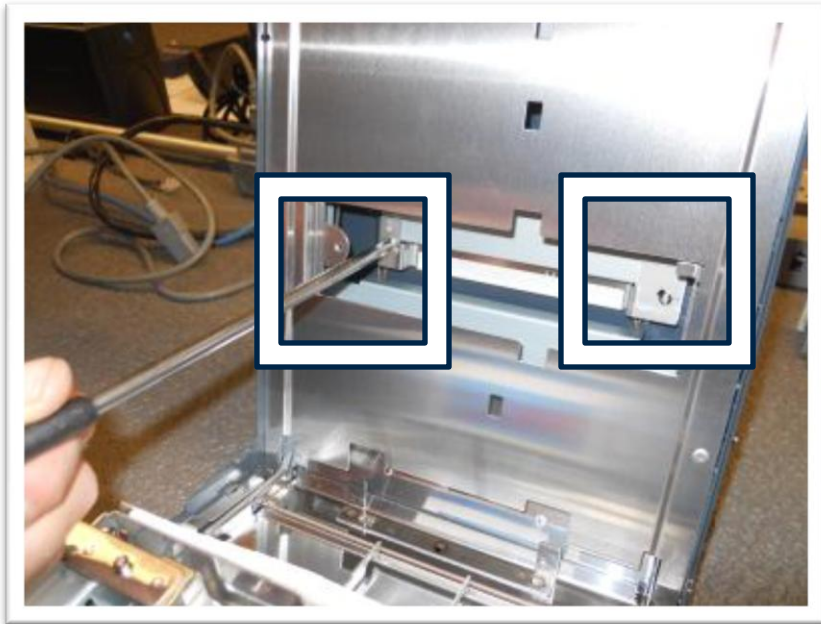
Removing the Faceplate

- Remove faceplate.



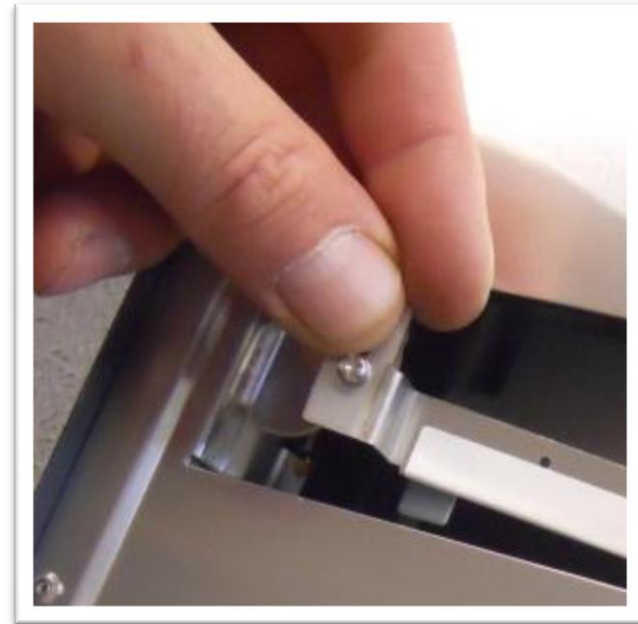
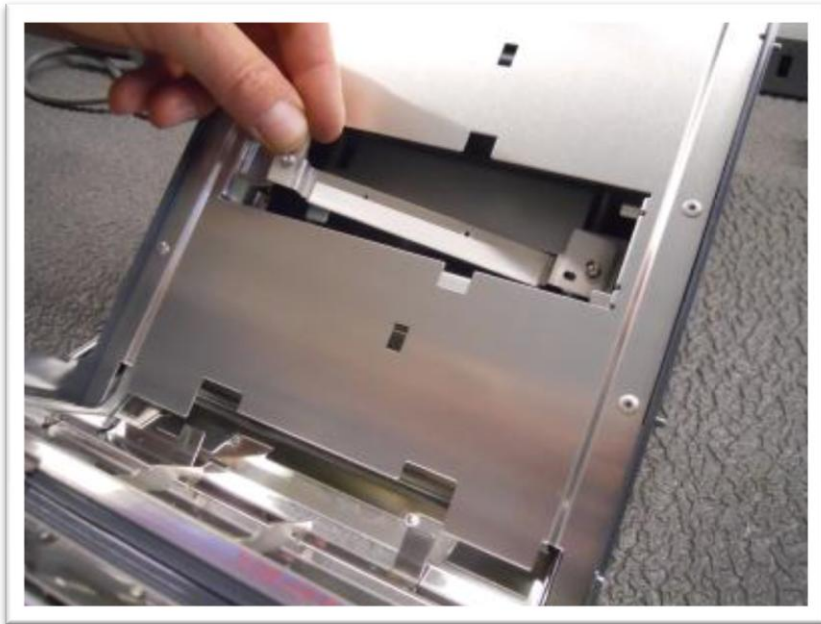
Removing the Bracket

- Locate bracket behind faceplate.
- Loosen two screws on bracket.



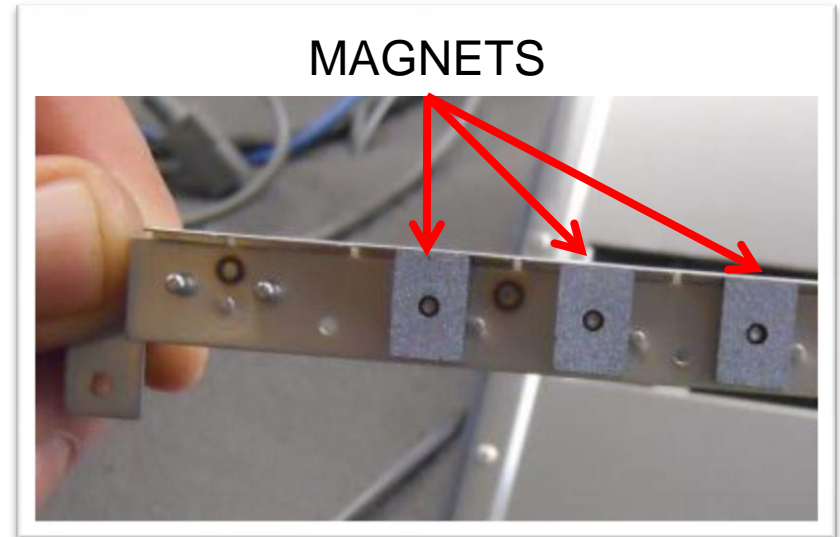
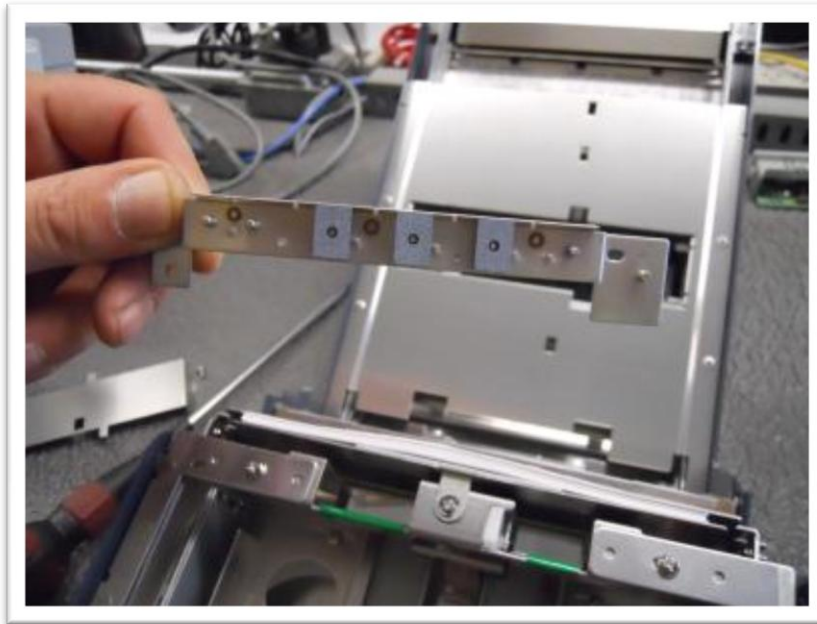
Removing the Bracket

- Remove bracket.



Locating the Magnets

- Locate magnets on reverse side of bracket.



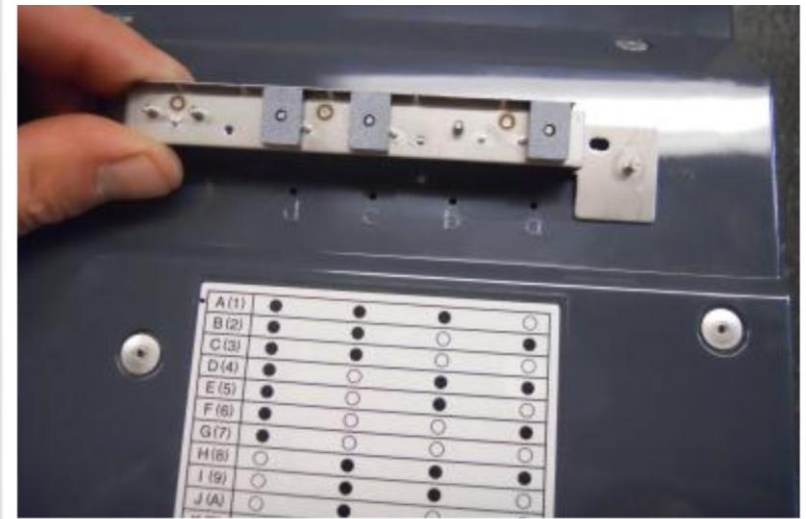
Positioning the Magnets

- Reposition magnets as required.

MAGNETS IN POSITION A(1)



MAGNETS IN POSITION B(2)



Replacing the Bill Dispenser

- Replace the bill dispenser following the instructions in reverse.
- Attach bracket.
- Attach faceplate.
- Replace bill dispenser in unit.

- Contact ICS Support for more information:
610-881-8001 - Direct
1-800-642-9396 - Toll free
- Information in this presentation is subject to change without notice. Companies, names and data used in examples within the presentation are fictitious unless otherwise noted. No part of this presentation may be reproduced or transmitted in any form or by any means, electronic or mechanical, for any purpose without the express written permission of Innovative Control Systems, Inc.
- ICS is not responsible for damage, bodily harm, loss of business, etc. due to the information contained in this document. Refer to the standard sales agreement and warranty information that came with your ICS product for more details.

Auto Sentry, Lube Master and Tunnel Master are registered trademarks of Innovative Control Systems, Inc.

Touch 'N Clean and Wash Valet are trademarks of Innovative Control Systems, Inc.

Fujitsu is a registered trademark of Fujitsu Limited Corporation, Japan .

DeLaRue is a registered trademark of De la Rue Holdings, plc.

Talaris is a registered trademark of Talaris Holdings Limited.